



Accessibility Plan

Version: July 2018

This Plan was adopted by:

The Directors of Ventrus Multi Academy Trust

on (date)

Signed by..... Chair of Directors

Review Date.....Signed.....

Review Date.....Signed.....

This Accessibility Plan is drawn up in compliance with current legislation and requirements as specified in Schedule 10, relating to Disability, of the Equality Act 2010. School Governors are accountable for ensuring the implementation, review and reporting of progress of the Accessibility Plan over a prescribed period.

The Equality Act 2010 replaced all existing equality legislation, including the Disability Discrimination Act. The effect of the law is the same as in the past, meaning that "schools cannot unlawfully discriminate against pupils because of sex, race, disability, religion or belief and sexual orientation".

According to the Equality Act 2010 a person has a disability if:

- (a) He or she has a physical or mental impairment, and
- (b) The impairment has a substantial and long-term adverse effect on his or her ability to carry out normal day-to-day activities.

The Accessibility Plan is structured to complement and support the school's Equality Objectives, and will similarly be published on the school website. We understand that the Local Authority will monitor the school's activity under the Equality Act 2010 (and in particular Schedule 10 regarding Accessibility) and will advise upon the compliance with that duty.

Objectives

The St David's C of E Primary School Accessibility Plan shows how access is to be improved for pupils, staff and visitors to the school within a given time frame and anticipating the need to make reasonable adjustments to accommodate their needs where practicable.

The Accessibility Plan contains relevant and timely actions to:-

Improve and maintain access to the physical environment of the school and/or to the curriculum and to make improvements of the delivery of written communications.

Whole school training will recognise the need to continue raising awareness for staff and governors on equality issues with reference to the Equality Act 2010.

This Accessibility Plan should be read in conjunction with the following school policies, strategies and documents:

- Behaviour Policy
- Curriculum Policies
- Emergency Plan
- Health & Safety Policy
- School Improvement Plan
- Special Educational Needs Policy

And other relevant policies.

Relevant reviews and associated audits will be carried out in a timely, manner in order to inform accessibility planning.

The Accessibility Plan will be published on the school website.

The Accessibility Plan may be monitored by Ofsted during inspection processes in relation to Schedule 10 of the Equality Act 2010.

Approved July 2018

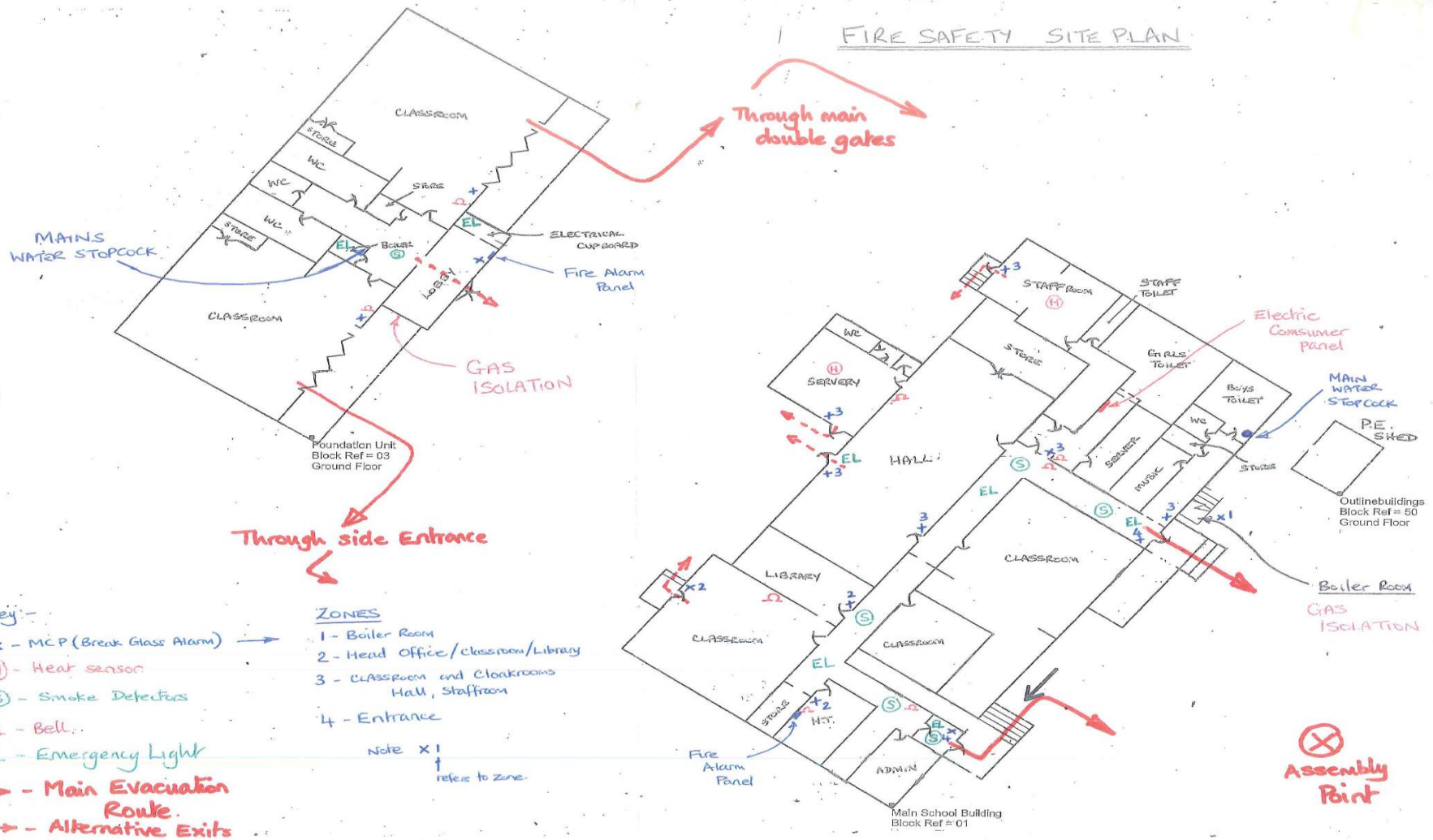
Date July 2018

It is a requirement that the school's accessibility plan is resourced, implemented, reviewed and revised as necessary and reported on annually. Attached is a set of action plans showing how the school will address the priorities identified in the plan.

St David's C of E Primary School

ACCESSIBILITY PLAN

A plan of the school buildings showing areas of accessibility is shown below



St David's C of E Primary School
ACCESSIBILITY PLAN

Access	Item	Activity	Timescale	Cost
1.	Front entrance outside stairs	All steps of the staircase to have repainted white lines.	Autumn term 2018	Quote to be sought
2.	Step at front gate	To have a ramp in place to ensure easy access through the main playground.	Autumn term 2018	Quote to be sought

St David's C of E Primary School
ACCESSIBILITY PLAN

Schedule 21: Action Plan A – Improving Physical Access

Ref	Question	Recommendations	Time Scale	Priority	Cost	Date Completed	Responsibility	
							PFT	School
1.	Disabled toilet	Keep disabled toilet free from any clutter/objects.	Immediate	High	None	Ongoing		Sch
2.	Corridor	Keep corridors clear from obstructions.	Immediate	Medium	None	Ongoing		Sch
3.	Disabled parking	Space to be provided when requested.	Immediate	Low	None	Ongoing		Sch

St David's C of E Primary

School

ACCESSIBILITY PLAN

Schedule 22: Action Plan B – Improving Curriculum Access

Ref	Question	Recommendations	Time Scale	Priority	Cost	Date Completed	Responsibility	
							PFT	School
1.	Differentiation in Teaching	SLT/SENDCo to monitor quality of differentiation and provision for SEND pupils.	End of Autumn term 2018	Medium	SLT/SENDCo release costs			Sch
2.	Interventions	SENDCo to audit current interventions and their success/impact on progress.	End of Autumn term 2018	Medium	Resourcing costs of identified areas to develop			Sch
3.	Classrooms are organised to promote the participation and independence of all pupils	SENDCo to carry out an audit of resources to ensure that lessons are planned to meet the needs of all pupils in the class. To use the AET Framework and Communication Friendly audit.	End of Autumn term 2018	Medium	Possible resource implications where gaps are identified			Sch

Ref	Question	Recommendations	Time Scale	Priority	Cost	Date Completed	Responsibility
4.	Staff training in supporting pupils with SEND – focus on key areas of need within the school: SLCN & SEMH (Thrive & EH4MH)	SENDCo and HLTA to deliver training where possible. Identify gaps in knowledge.	End of Autumn term 2018	Medium			

St David's C of E

Primary School

ACCESSIBILITY PLAN

Schedule 23 Action Plan C – Improving the Delivery of Written Information

Ref	Question	Recommendations	Time Scale	Priority	Cost	Date Completed	Responsibility	
							PFT	School
1.	Availability of written material in alternative formats when specifically requested.	The school will make itself aware of the services available for converting written information into alternative formats.	Ongoing	High	Dependent on task Translation / Braille / Large print etc	Ongoing		Sch
2.	Review documentation on website to check accessibility for parents with English as an Additional Language.	The school will review formats publicised on school website – particularly for new parents to the school, in order to ensure accessibility for parents with English as an additional language.	Ongoing	Medium	Not applicable	Ongoing		Sch